

E GENERATIONS

M.A.G.I.C. News for Members and Friends

Midwest Afro-American Genealogical Interest Coalition



SATURDAY: Black History Month at the Mid-Continent Library

<https://www.mymcpl.org/featured/black-history-month>

RESERVE A SEAT TO MAGIC'S WORKSHOP AND KEYNOTE ADDRESS:

<https://www.mymcpl.org/events/84576/magic-and-mgc-presents-underused-records-black-genealogy>



2023 Genealogy Day in Joco

Mark your calendars for the **National Genealogy Day Open House and Resource Fair**, Saturday, March 11, 2023 from 9:00 a.m. to 4 p.m. at the Johnson County Central Resource Library, 9875 W. 87th St., Overland Park, KS.

MAGIC will be represented at a table among its peers, so stop by and check it out!

The event is open to the public and will be a day filled with genealogy resources for those who want to begin or expand their family research journey and learn more about local organizations that can help them. In past years there have been from 300 to 500 people attending the event. Please see the attached flyer.

Attendees may:

- Tour the genealogy area and genealogy collection.
- Learn about library and genealogical society resources, both in-house and on-line.
- Pick up forms and information
- Attend informative 45-minute sessions on various topics including Internet Genealogy and Find a Grave

- Visit with regional genealogy group members and view their exhibits
- Learn about genealogy software programs.
- See *Fruits of their Research* displays with examples of family histories, pedigree charts, stories and scrapbooks.

No registration is required. Open to the public. The event is co-sponsored by the Johnson County Library and the Johnson County Genealogical Society (established in 1972).

Greater Kansas City Black History Study Group-Facebook

Sign up for notices of monthly/regular meetings

Greater Kansas City Black History Study Group in March

Women's History Month Program

Saturday, March 18, 2023

1:00 p.m.

Anita B. Gorman Conservation Discovery Center
4750 Troost Ave.

Kansas City, MO

2023 Theme: Black Resistance

Topic: Black Women's Club: Purpose and Impact

Participants:

Ms. Linda Kimble Johnson, President-Kansas Citians Women's Social Club

Ms. Diana Kolen, Historian-Twin Citians Women 's Social Club

Ms. Frances Bradley Robinson, Hlstorian-Pierian Club

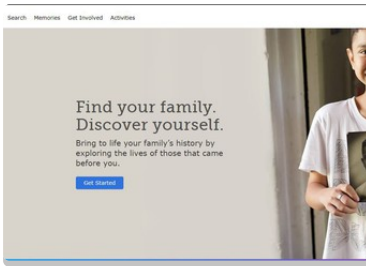
Mr. Rodney Thompson-Documentarian, *My Mother's Club*

Black Kansas City History Study Group-Website

Start Your Journey with FamilySearch.org Today

<https://www.familysearch.org/en/>

Create a FREE account. Consider taking a FREE beginner's class:



MAGIC Represented on FamilySearch.org African American Societies

https://www.familysearch.org/en/wiki/African_American_Societies

MAGIC's Monthly Meeting for April

When

Saturday, April 1st, 12-2pm

Where

4301 East 43rd Street Kansas City, MO

More information

Vineyard Community Center

African American Heritage Trail of Kansas City (click)



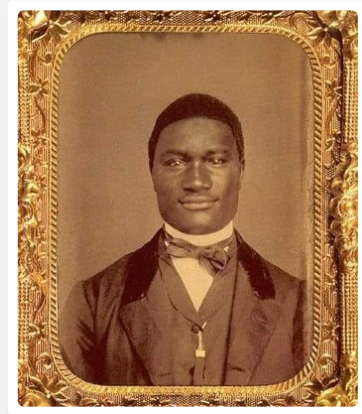
MAGIC

Do you have random family images?



COLLECTS

Care to share copies, even anonymously?



IMAGES

Please send usable scans to magickc.org@gmail.com

SUBMIT A HELPFUL LINK

Let us hear from you!

magickc.org@gmail.com

Genealogy Helps for African Americans

African-American Historical Textiles/Quilts

Thanks to our friend Dolores Rush for these links:

Textile Talk: Uncovering Black History: Quilts from the Collection of Carolyn Mazloomi =
<https://youtube.com/watch?v=tggja8P41II&feature=shares>

These persons were mentioned in the video. I couldn't find everyone, but every one I could find went into my Persons of Color or Border War virtual cemetery.

<https://www.findagrave.com/memorial/7181274/robert-scott-smalls>

[Hattie McDaniel \(1895-1952\) - Find a Grave Memorial](#)

[George Perry Floyd Jr. \(1973-2020\) - Find a Grave Memorial](#)

[Levi Coffin \(1798-1877\) - Find a Grave Memorial](#)

Is there a black quilting guild in Kansas City?

"The Underground Railroad Quilt Controversy: Looking for the 'Truth'" by Laurel Horton

<https://youtube.com/watch?v=p362BfNSp6A&feature=shares>

The Knowledge Exchange - Quilts of the Underground Railroad= <https://youtube.com/watch?v=LU6y0YUHSZc&feature=shares>

Wyse Talk with Jan Doyle; Quilts In The Underground Railroad: Fact or Fiction =

<https://youtube.com/watch?v=2dJs6HluANK&feature=shares>

I was introduced to Kawandi Quilts by my friend Annie Claxton on YouTube.

Siddi Women at Work in Mainali, Making Quilts. Suggest watching full screen. The Siddi women are from Africa, who settled in India. Annie's great-grandmother was Indian. =

<https://youtu.be/9F2CWgQKLzo>

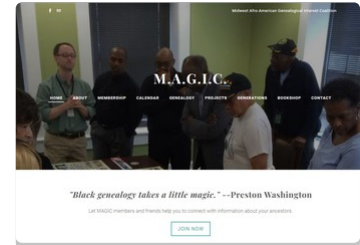
<https://blackdoctor.org/>

[Black-Owned Subscription Boxes for 2023 | Cratejoy.](#)

MAGIC Website

Renew (or Join) MAGIC Today :)

Membership is \$20/year (Jan-Dec). Most of our expenses are clerical maintaining our website, email channel, and this newsletter support system. Pulling off events like Black History Month programming also takes a chunk of our finite budget.



Hopefully you know our volunteer board is frugal in its outlook and expenditures, and we value every membership contribution. We appreciate that you see the worthiness of our mission to join and maintain your membership with MAGIC.

Go to <https://www.magickc.org/membership.html> (choose your option; the first button allows you to make a donation in any amount...all TAX DEDUCTIBLE ;)



Thoughts and Prayers

Please hold a moment of silence and send good thoughts to MAGIC members and friends.

Also, keep the spirits of your ancestors at the forefront of your daily life. After all, they each did at least one monumental thing in their life.....they had a child...that survived...through puberty. Otherwise, YOU would not be here ;)

In the 1997 Academy Award nominated motion picture, Amistad, there is a scene, "A Call to the Ancestors," when the lead African character, Cinque says of his ancestors, "I will call into the past, far back to the beginning of time, and beg them to come and help me...I will reach back and draw them into me. And they must come. For at this moment ... I am the whole reason they have existed at all."